

110 V ~

50–60 HZ
4 h

230 V ~

50–60 HZ

400 V ~

50–60 HZ
6 h

500 V ~

50–60 HZ
7 h

> 50 V ~

100–300 HZ
10 h

> 50 V ~

301–500 HZ
2 h

Polzahl

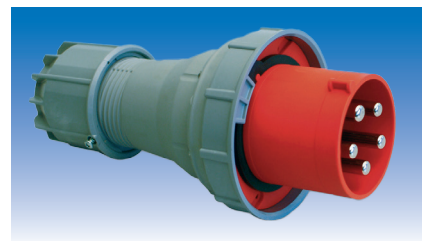
Nennstrom Ampere

Stecker
Kupplungen
Anbaudosen – schräg

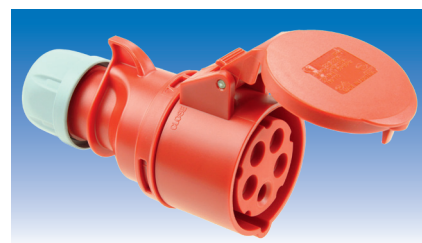
S1113	S2213					3	16
S1114	S2214	S3814	S5014	S50110H	S5012H	4	16
		S3815				5	16
S1133	S2233					3	32
S1134	S2234	S3834	S5034	S50310H	S5032H	4	32
		S3835				5	32



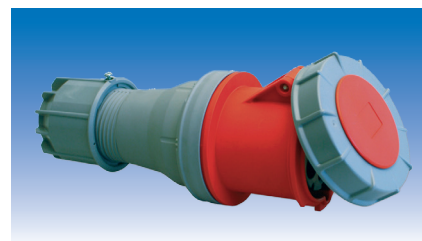
S1163	S2263					3	63
S1164	S2264	S3864	S5064	S50610H	S5062H	4	63
		S3865				5	63
		S38X4	S50X4			3	125
		S38X5				4	125
						5	125



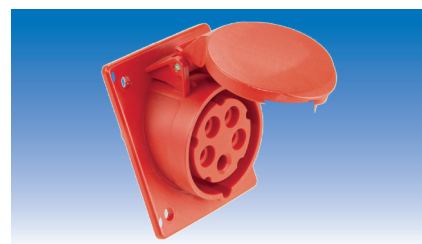
K1113	K2213					3	16
K1114	K2214	K3814	K5014	K50110H	K5012H	4	16
		K3815				5	16
K1133	K2233					3	32
K1134	K2234	K3834	K5034	K50310H	K5032H	4	32
		K3835				5	32



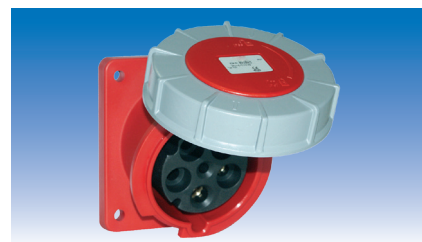
K1163	K2263					3	63
K1164	K2264	K3864	K5064	K50610H	K5062H	4	63
		K3865				5	63
		K38X4	K50X4			3	125
		K38X5				4	125
						5	125



AD1113S	AD2213S					3	16
AD1114S	AD2214S	AD3814S	AD5014S	AD50110HS	AD5012HS	4	16
		AD3815S				5	16
AD1133S	AD2233S					3	32
AD1134S	AD2234S	AD3834S	AD5034S	AD50310HS	AD5032HS	4	32
		AD3835S				5	32



AD1163S	AD2263S					3	63
AD1164S	AD2264S	AD3864S	AD5064S	AD50610HS	AD5062HS	4	63
		AD3865S				5	63
		AD38X4S	AD50X4S			3	125
		AD38X5S				4	125
						5	125



– weitere Ausführungen und auf Anfrage –
– Änderungen und Irrtum vorbehalten –